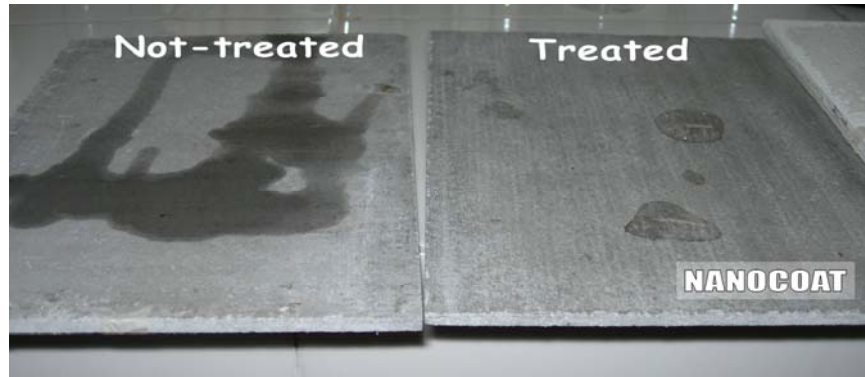




Water Based
 Nano Technology
 Deeper Penetration
 Better Shielding
 Longer Protection
 Environmentally Friendly

CPG-1500 : : Cement Based Penetrating Microgel Water Proofing Agent



Surface treated with CPG-1500 show a good repellent to water, compare to not-treated surface, water will break and seep into the concrete.

CPG-1500 will penetrate 5mm into the concrete.

Introduction / Main features

- Moisture barrier from inside to outside & vice versa – below 1.5 bar
- Penetrating sealer 5mm below surface, not surface coating, react inside concrete. Safe from UV damaging effect and not easily dry / crack
- Under certain condition, CPG-1500 could last more than 20 years, because the crystal formed inside the concrete will stay forever and coexist with the concrete. Repeated application is not necessary
- Hardens the penetrated concrete by 10%-20%
- Protect concrete from deterioration by chlorides, airborne pollutants and chemicals harmful to its long life. Inhibits the ingress of oils, greases and light acids
- No change to the feature of the concrete
- Best result on new or reinforced concrete with good quality of cement / plaster
- Forming a gel in 1 minute and will become a crystal hard in 21 days
- Thin application – quick dry, fast application, less coat needed / m2
- Nano size particle - deeper penetration, better bonding, better protection
- Water based product - easy cleaning, less odor, non-flammable, quick dry, environmentally safe

Application

Interior or exterior wall sealing water-proofing and anti-permeability, suitable for: base floor, damp wall, bathroom, wall surface, basement, large (overpass) bridge floor, pier, public road surface, airport runway, water tower (pond), tunnel, culvert and other cement based

Coverage

- 1st layer – 40-180 gr/m2
- 2nd layer – 110-150 gr/m2
- 3rd layer – 110-150 gr/m2

Technical Index

No	Detected Items	Performance Index
1	Appearance	Transparent insoluble water based solution with no color, taste and hazardous chemical
2	Density (g/m2)	> 1.100
3	Ph Value	13 ± 1
4	Viscosity (s)	11.0 ± 0.5
5	Surface Tension	< 26.0
6	Gel Time	Initial set : 2.0 ± 0.5 Final set : 3.0 ± 0.5
7	Penetrability (24h penetrative depth)	> 10
8	Water resistance (penetrative height of water based 1MPa/mm)	< 150
9	Storage Stability	Quality index is unchanged for storing up to 12 months at common temperature

Statement:

This brochure is based on our testing and experience and can be used as a construction guideline. Given the fact that many factors can affect the end result, we are only responsible for the quality of the product. As the technological progressing, we reserve the right to modify this specification without notice.

